



ESPEN PRACTICAL GUIDELINE: CLINICAL NUTRITION IN CANCER

Maurizio Muscaritoli, MD
Department of Translational and Precision Medicine
Sapienza, University of Rome, Italy
ESPEN Coordinator,
Oncology Practical Guideline



Journal of Cachexia, Sarcopenia and Muscle (2019)
Published online in Wiley Online Library (wileyonlinelibrary.com) DOI: 10.1002/jcsm.12420 ORIGINAL ARTICLE

Nutritional and metabolic derangements in Mediterranean cancer patients and survivors: the ECPC 2016 survey

Maurizio Muscaritoli^{1*}, Alessio Molfino^{1*}, Ferdinando Scala², Kalliopi Christoforidi³, Isabelle Manneh-Vangramberen³ & Francesco De Lorenzo³

¹Department of Translational and Precision Medicine (formerly Department of Clinical Medicine), Sapienza University of Rome, Rome, Italy; ²Healthcare International c/o Palazzo Innovazione, Salerno, Italy; ³European Cancer Patient Coalition (ECPC), Brussels, Belgium

The results of this survey indicate that patients and physicians have significantly different perspectives on the nutritional aspects of cancer and its therapy. Nearly all respondents recognized the importance of adequate nutrition during therapy, and while the majority of respondents had experienced feeding problems during cancer therapy, more than 50% reported that their physician had not asked them about feeding issues.

Clinical Nutrition 36 (2017) 11–48

Contents lists available at [ScienceDirect](#)

Clinical Nutrition

journal homepage: <http://www.elsevier.com/locate/clnu>


ELSEVIER

CLINICAL NUTRITION

ESPEN Guideline

ESPEN guidelines on nutrition in cancer patients[☆]


Jann Arends ^a, Patrick Bachmann ^b, Vickie Baracos ^c, Nicole Barthelemy ^d, Hartmut Bertz ^a, Federico Bozzetti ^e, Ken Fearon ^{f,†}, Elisabeth Hütterer ^g, Elizabeth Isenring ^h, Stein Kaasa ⁱ, Zeljko Krznaric ^j, Barry Laird ^k, Maria Larsson ^l, Alessandro Laviano ^m, Stefan Mühlebach ⁿ, Maurizio Muscaritoli ^m, Line Oldervoll ^{i,o}, Paula Ravasco ^p, Tora Solheim ^{q,r}, Florian Strasser ^s, Marian de van der Schueren ^{t,u}, Jean-Charles Preiser ^{v,*}

 CrossMark

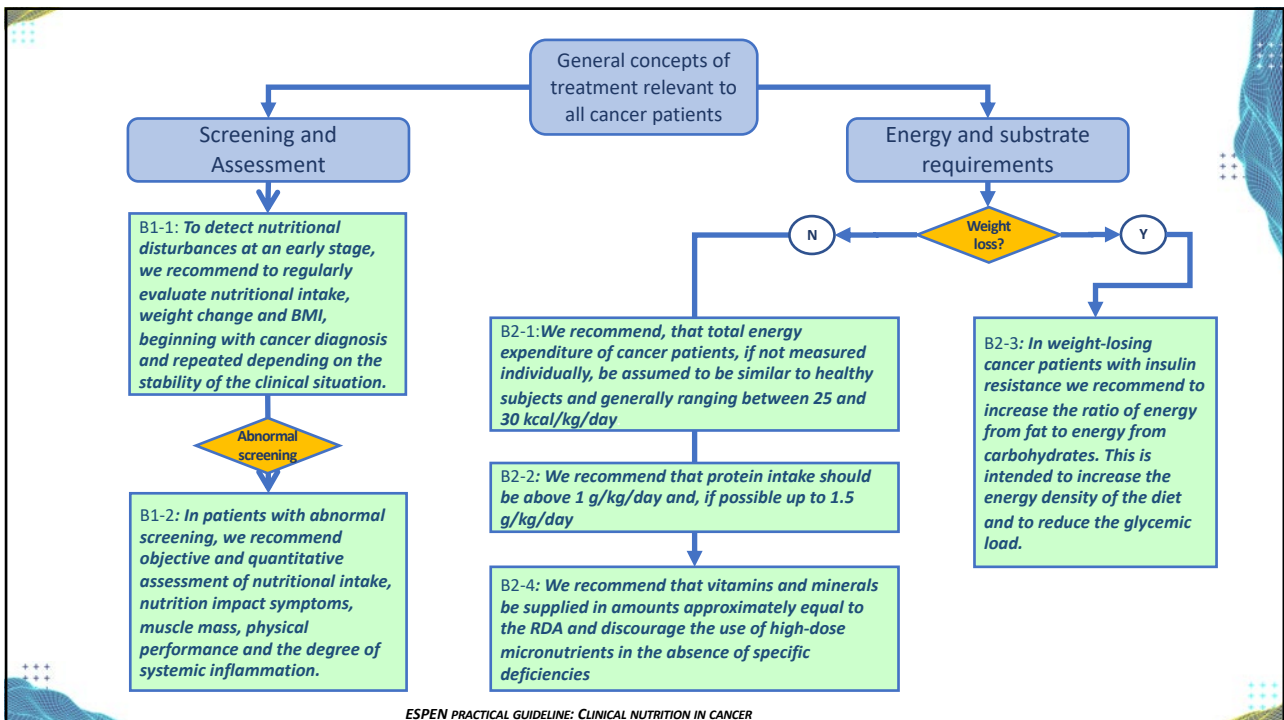
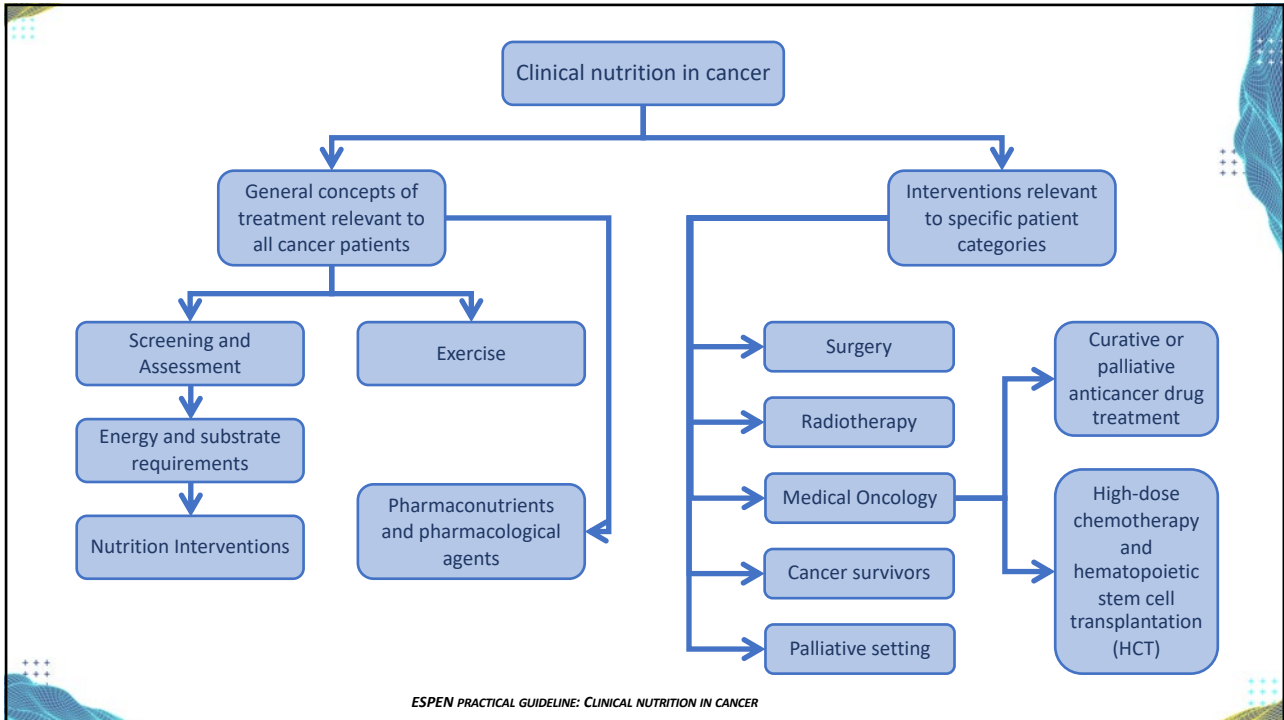
Total citations: 614. (Source: Scopus, 9/17/2020)

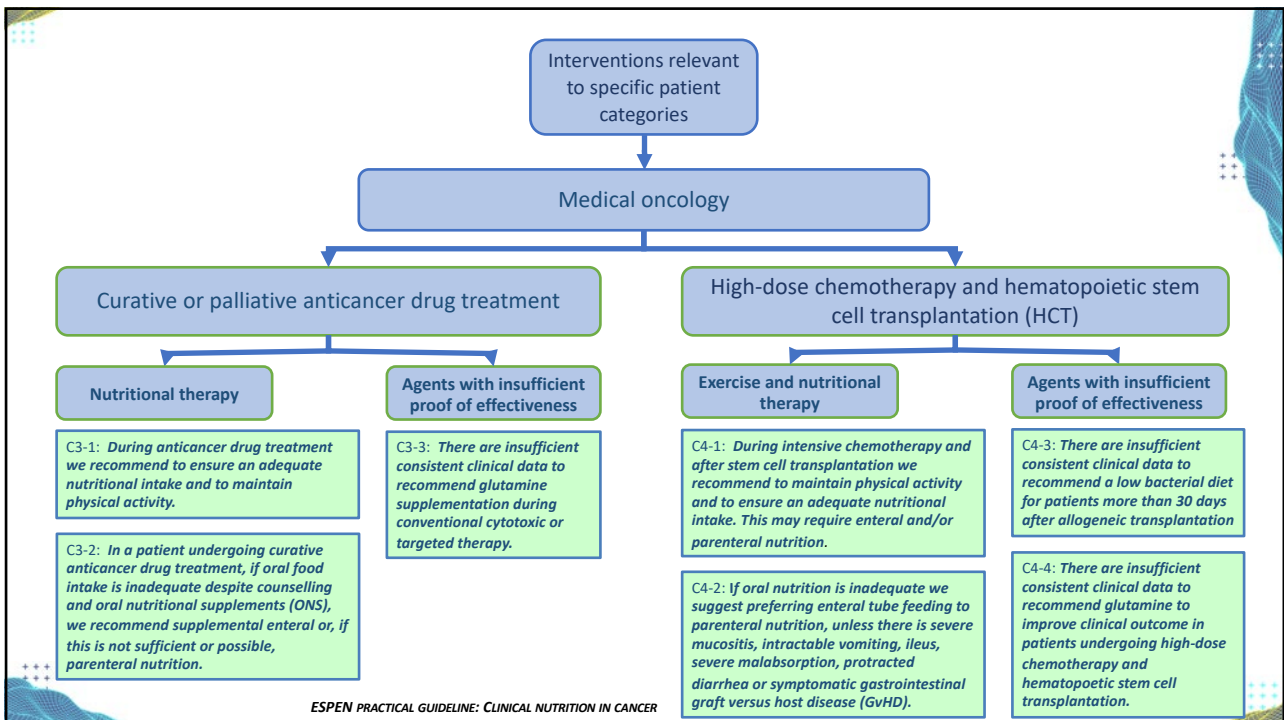
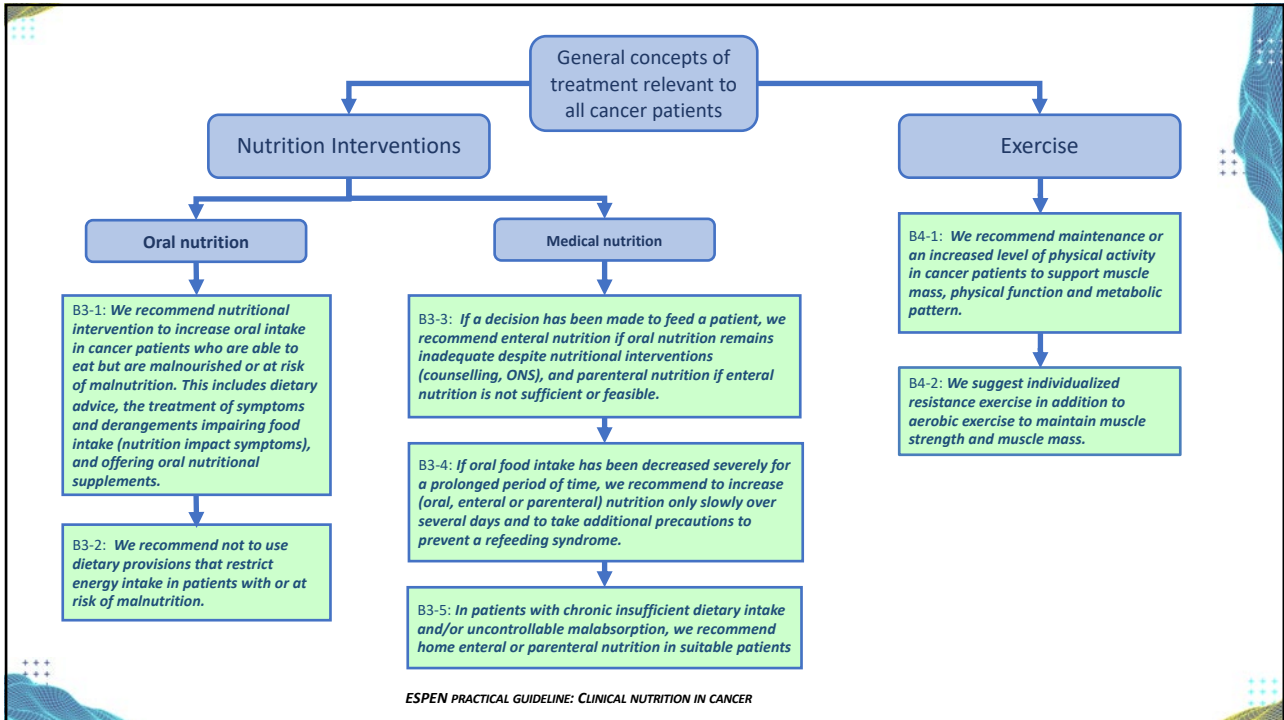
ESPEN PRACTICAL GUIDELINE: CLINICAL NUTRITION IN CANCER

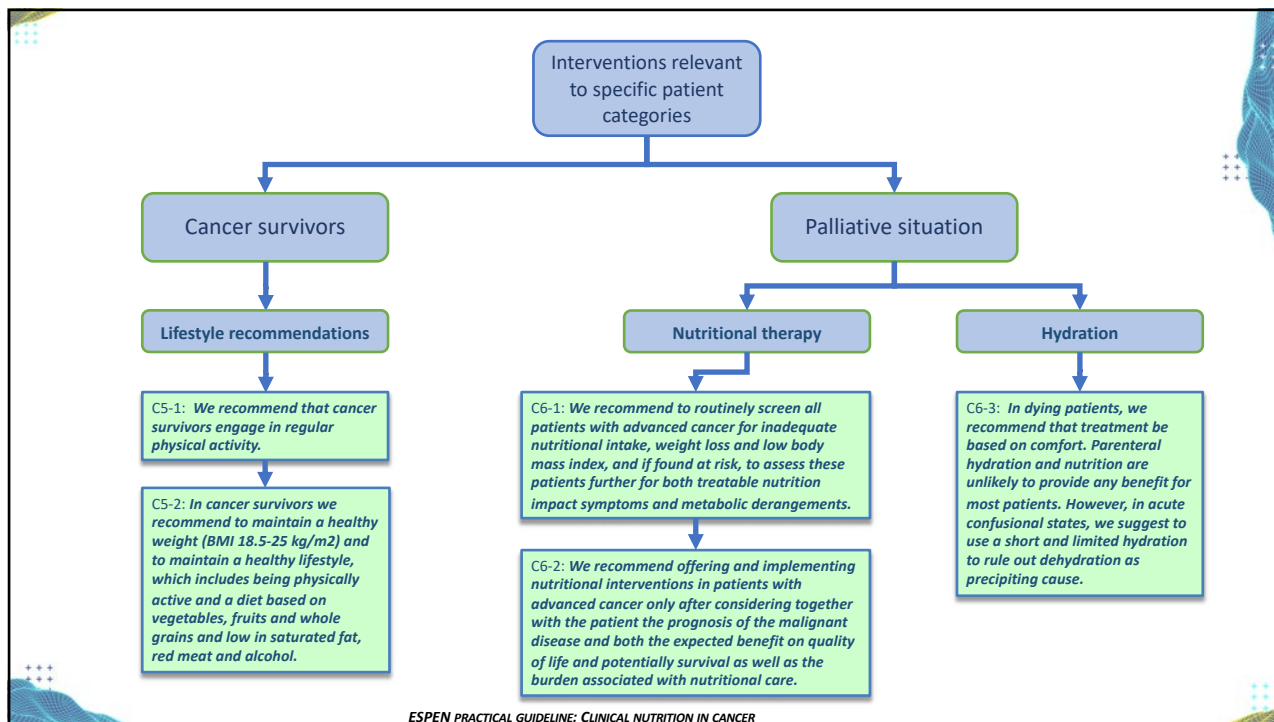
- Consists of 43 recommendations
- Based on European Society for Clinical Nutrition and Metabolism (ESPEN) guidelines on nutrition in cancer patients¹.
- Original guideline shortened by restricting the commentaries to the gathered evidence and literature on which the recommendations are based on
- Recommendations were not changed
- Presentation of the content was transformed into a graphical presentation consisting of decision-making flow charts




¹Arends J, et al. Clin Nutr 2017. 36: 11-48







 **ESPEN**
The European Society for Clinical Nutrition and Metabolism

ESPEN PRACTICAL GUIDELINE: CLINICAL NUTRITION IN CANCER

IMPLEMENTATION THROUGH DIFFERENT STRATEGIES

- Paper in Clinical Nutrition (in a few weeks)
- APP for Android® and Mac® iOS®
- Web-based version soon available on the ESPEN Website
- Patients' version in collaboration with pts organization
- Translation into different languages possible upon request



ESPEN PRACTICAL GUIDELINE: CLINICAL NUTRITION IN CANCER

Thank you for
your attention!